

## FUNCTIONAL SPLICE JOINT INSTRUCTIONS

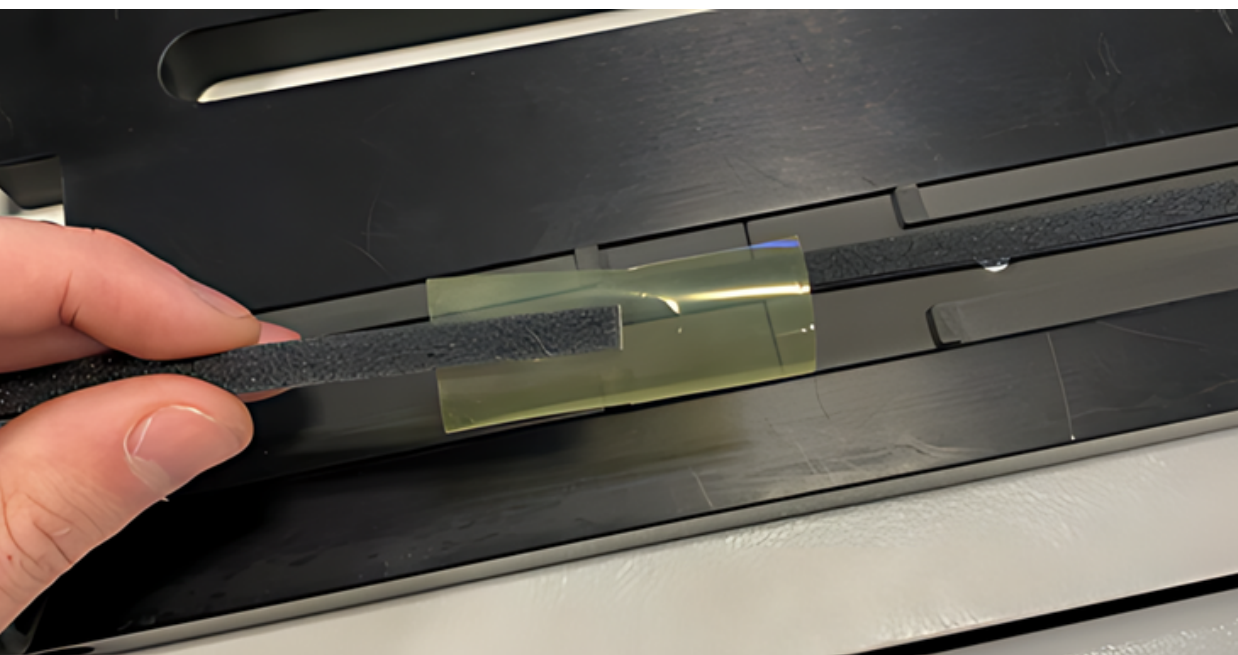
### FUNCTIONAL SPLICE

#### Follow these instructions to form a function splice

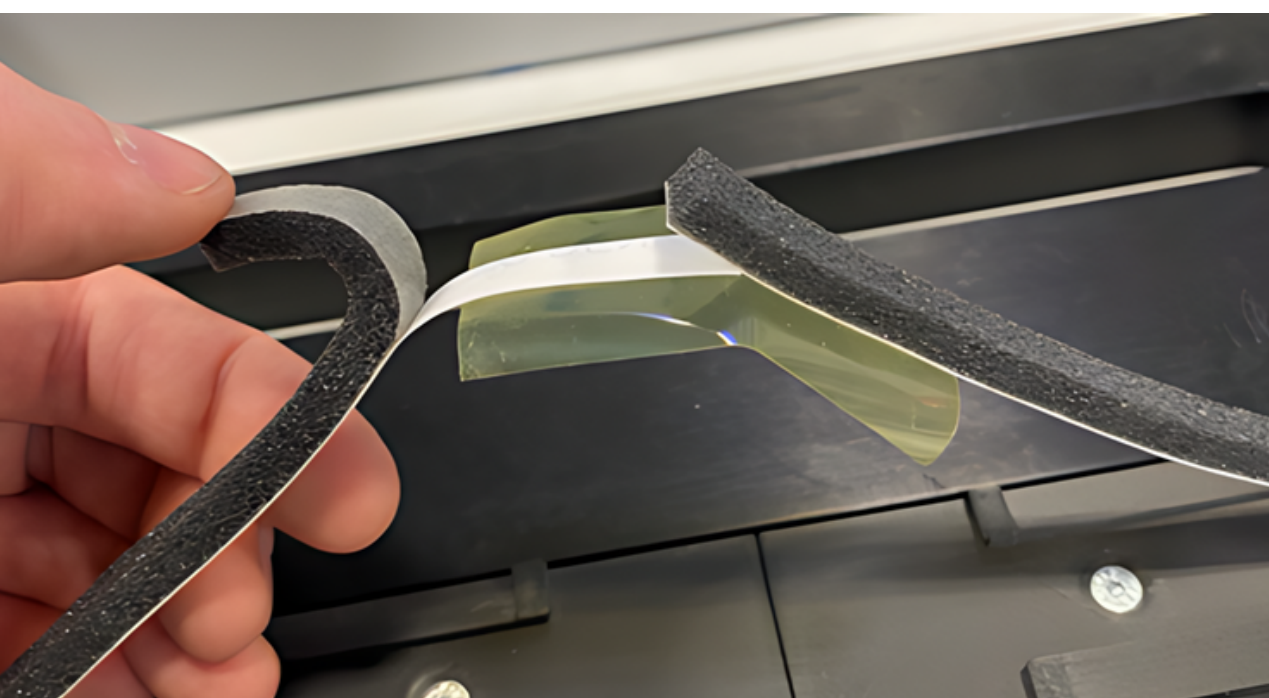
- 1) Ensure the splice clamp is down before beginning, if the clamp is not down it can be manually triggered by navigating to Setup > Splice Mode.
- 2) Provide material for overlap of the two ends.



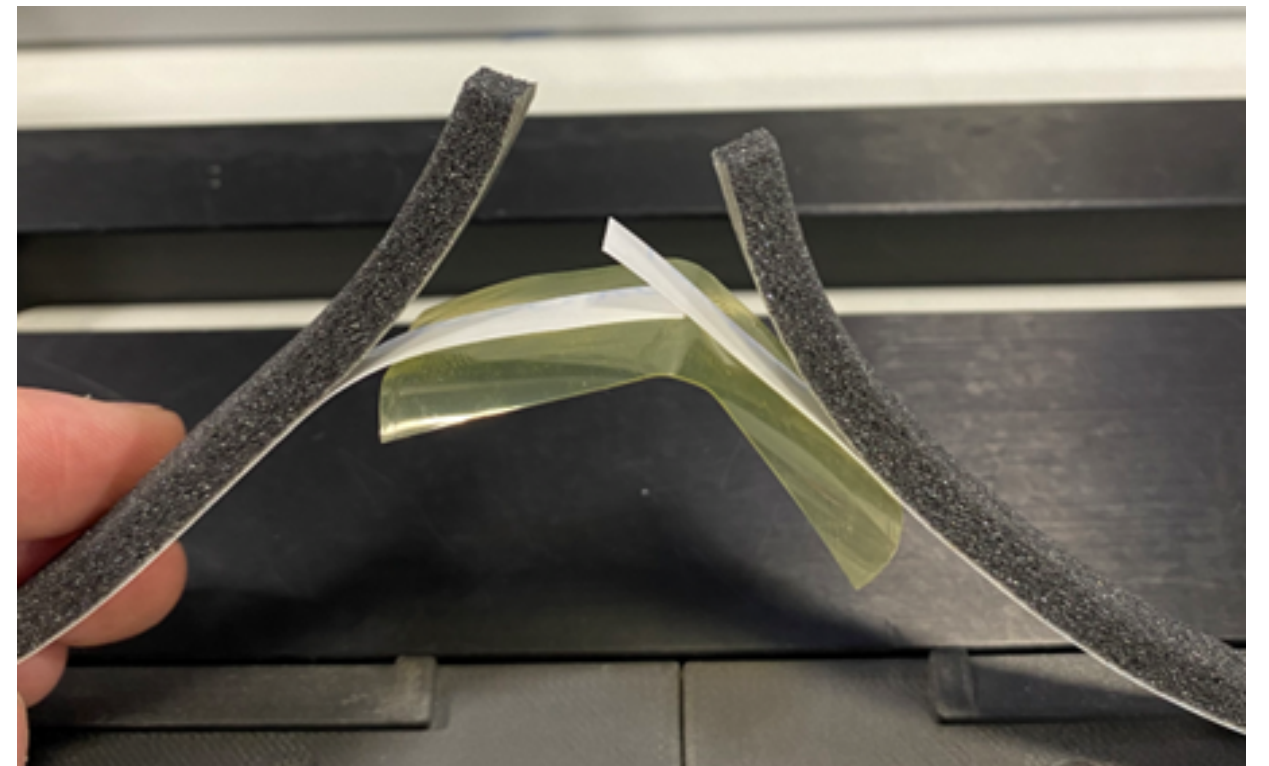
- 3) Using the supplied splice tape (usually red, yellow or blue), cut a 50mm (2") piece and place it on the bottom liner of the Trailing End centered.



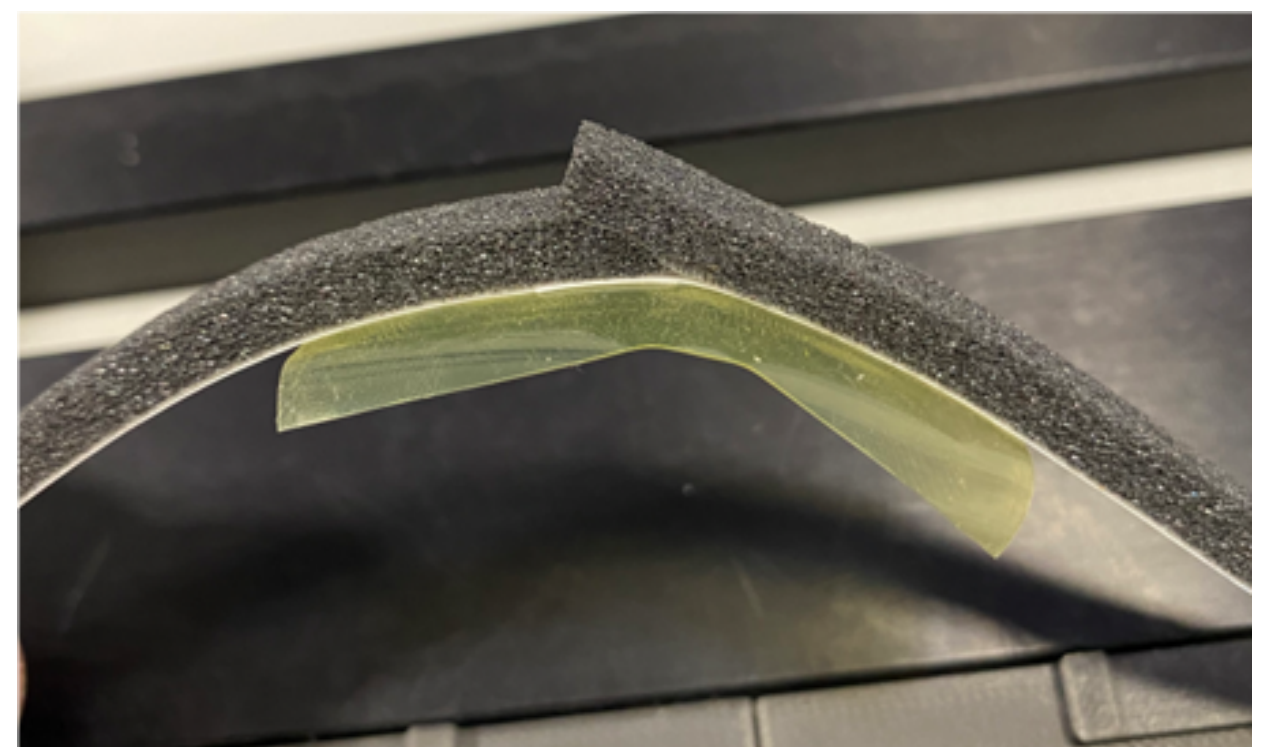
- 4) Peel back the material or adhesive foam on the trailing end and place the Leading end liner overlapped approximately 10mm (3/8"). The overlap in this direction is critical.



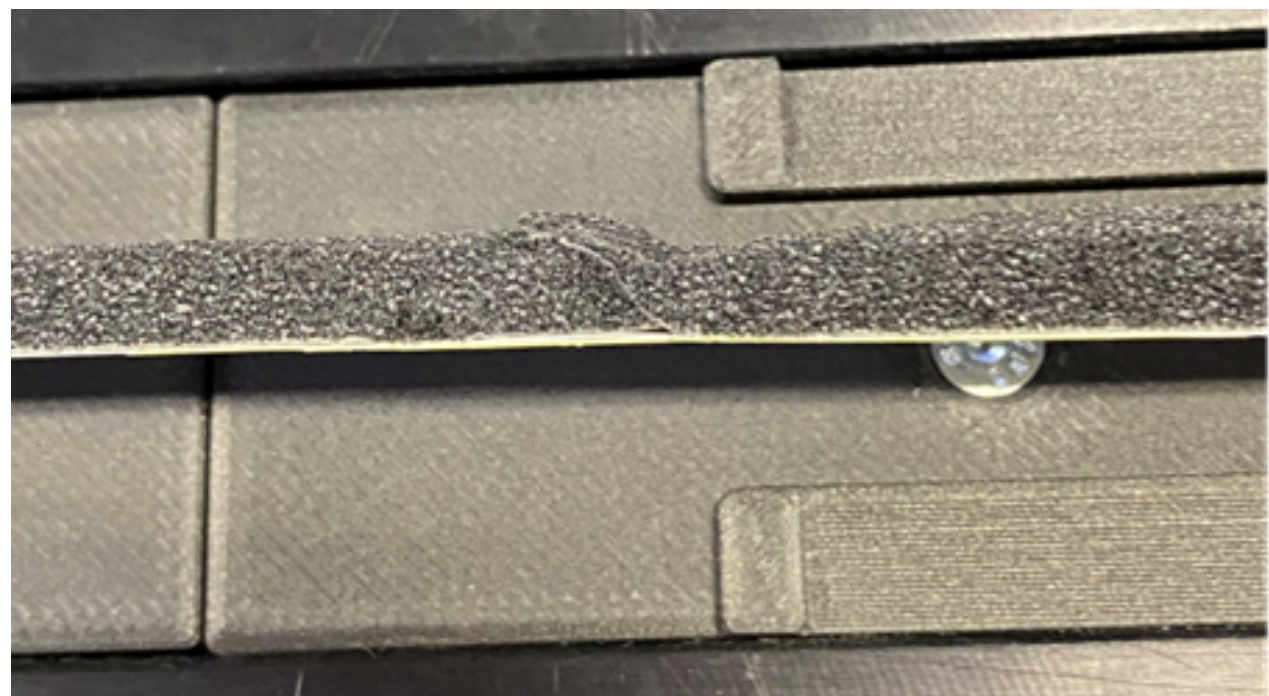
- 5) Peel back one inch off the leading end and lay the Trailing end down first with the Leading end afterwards.



- 6) Press well to ensure the material is stuck to the liner.



- 7) Slice the excess splice tape away from both sides and trim the material flush on the top side.



- 8) Release the hand clamps and material clamps. Acknowledge "Splice Complete" on the HMI to continue normal operation.